



ARIEL CORPORATION

A Brief History

Becoming the World Standard

Innovation requires more than an idea – it needs vision. Quality is more than strength; a product must be designed to exceed expectations and to anticipate changing needs. In the mid-1960s, Ariel founder Jim Buchwald studied the changes in the oil and gas industry and understood that new technology was on the horizon. He set his sights on building a gas-gathering compressor of the highest quality to work with the new 1,800 RPM drivers. This new compressor had to be more than just durable, and more than just a piece of machinery to perform a task. Jim Buchwald envisioned precision and efficiency. He wanted to create

a compressor with the operator and mechanic in mind – a machine that would pay for itself, a compressor that would be easier to build and service.

Over five decades, Ariel's product line has grown to include compressors for a wide variety of applications ranging from 100 to 10,000 BHP, but one thing has never changed – our commitment to providing the best compressor and parts and service support in the industry. With more than 50,000 Ariel compressors shipped to more than 100 countries, Ariel is truly the World Standard in compression.

“ As we crossed South Main Street, empty at that hour, I said something to the effect that I knew a good name. **I then proceeded to describe my 1948 Ariel Square Four motorcycle with its unique two-crankshaft design and its delightful smooth running qualities.** That was the quality of the machinery we proposed to build, that is: elegant in conception and smooth running. My contention was that ‘Ariel’ was a perfect name. ”



JIM & MAUREEN BUCHWALD
1956

JIM BUCHWALD 1984



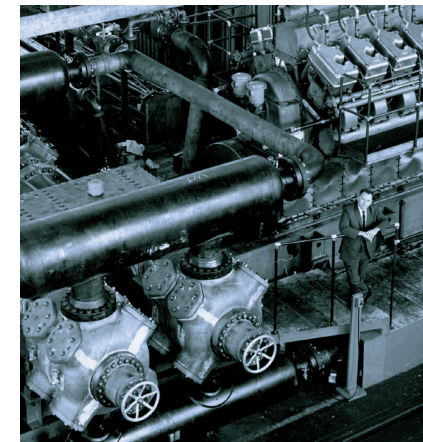
“ The most enjoyable job I have had as an engineer is designing. In my mind's eye, I could always see the three-dimensional form taking shape as I made the two-dimensional drawing, and on any heavily loaded part, I imagined that I was feeling the stresses. **The best part of all was when I had arrived at the point where the logic of the design took over, and I found myself chasing that design to completion.** When I was fully engaged in the creation process I couldn't wait to get back to the drafting board. ”



ARIEL CORPORATION

WORLD STANDARD COMPRESSORS SINCE 1966

1965 Back to Mount Vernon



Jim Buchwald receives a compressor design contract with Enterprise DeLaval, which brings the Buchwald family back to Mount Vernon, Ohio.



1966 Ariel's First Machine Shop

The basement of the Buchwald home becomes the first Ariel machine shop, with an adjoining room functioning as the first official engineering department.

1968 Mechanic St.



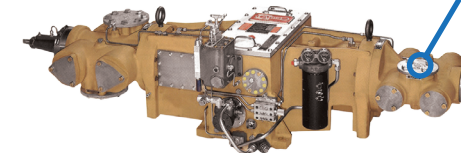
After finishing the prototype and acquiring more machine tools, Ariel searches for a new facility and finds a former car dealership.

1975 JGM

A lower HP compressor, with the same 3.5-inch stroke and 1,400 RPM rating of the production JG.



Maureen Buchwald

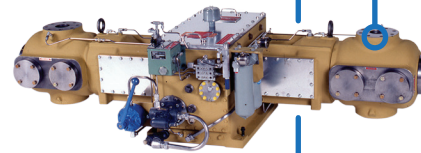


1978 JGW

A reduced horsepower version of the projected JGR, designed to be used with uprated JG cylinders.

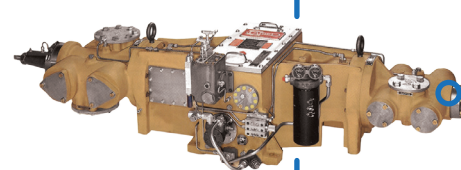


Johnny Warren



1976 JGP

In response to customer requests, Ariel produces a version of the JGM with a 3-inch stroke to take advantage of the 1,800 RPM engines.



Keith Paul



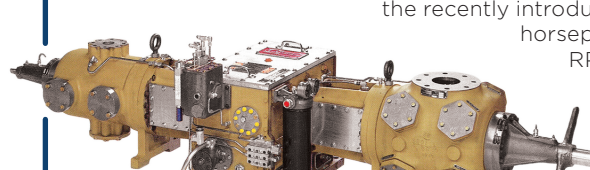
1980 Karen Buchwald



Karen Buchwald, Jim Buchwald's daughter, joins Ariel Corporation.

1982 JGA

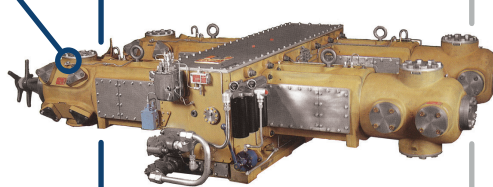
A 3-inch stroke, 1,800 RPM version of the JG is built to match the recently introduced, higher horsepower 1,800 RPM engines.



John Aldred (Enerflex)

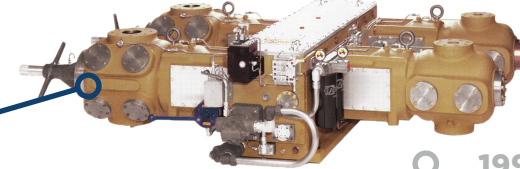
An Ariel distributor requests a 30,000 pound rod load unit, based on the JGH. The JGE features a ductile iron crosshead and steel crankshaft.

1987 JGE



1990 JGJ

Ariel introduces a 3.5-inch stroke, 1,800 RPM version of the JGR, made possible by a higher horsepower 1,800 RPM driver.

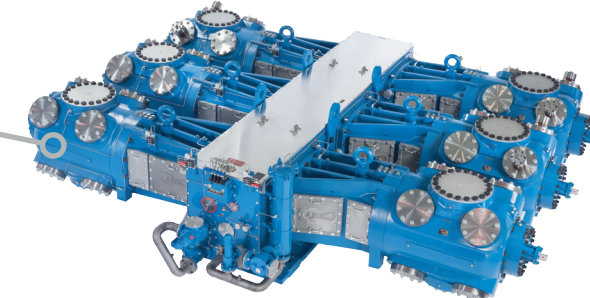


Kurt Buchwald

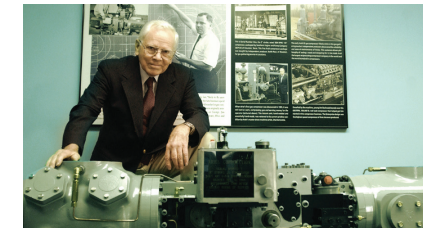


1997 JGB/V

Ariel introduces the largest high-speed reciprocating compressor available at the time, rated at 10,000 horsepower with rod loads in the 90,000 pound range. (Known today as the KBB/V)

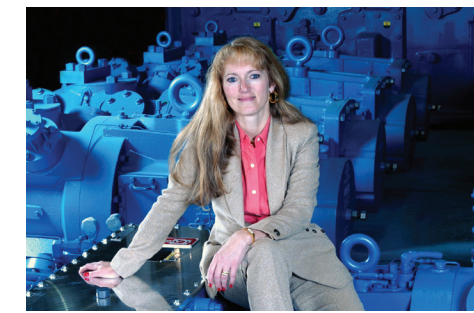


1997 Jim Buchwald Retires



On April 30, 1998, Jim Buchwald retires from Ariel Corporation.

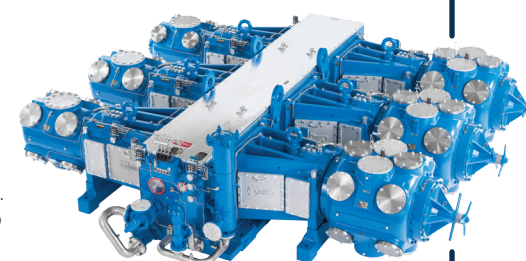
2001 A New Era



Karen Buchwald Wright, Jim Buchwald's daughter, assumes the Presidency of Ariel Corporation.

2002 JGZ/U

The JGZ/U is rated with a 7,800 horsepower, 75,000 pound rod load range. (Known today as the KBZ/U)



2012 World Distribution Network



Ariel opens Essup Park, a 58,000 square-foot distribution center located in Mount Vernon.

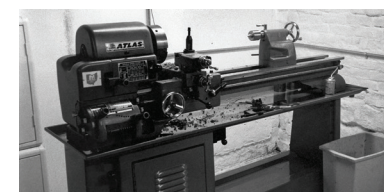
2016 50 Years

Ariel Corporation celebrates its 50th Anniversary.



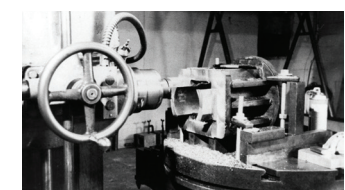
1960's

1966 The Prototype



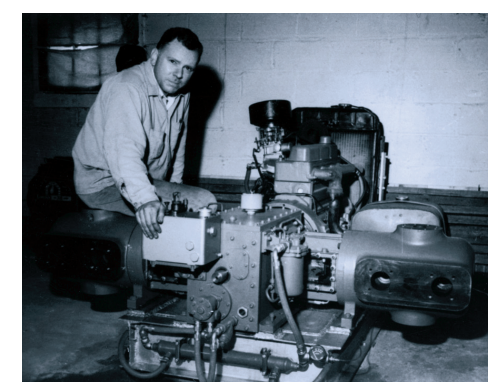
Jim Buchwald purchases an Atlas lathe, a small Palmgren hand cranked rotary table, and a vertical drill to manufacture eight valve bodies himself.

1966 Lucas Mill



Jim Buchwald teaches himself to become a machinist when a 1907 horizontal boring mill becomes available for \$2,200.

1968 Serial No. 1



Jim Buchwald poses with Ariel's prototype, the first in the JG line of compressors, after a 10 hour run test. The JG/2 will run at 1,400 RPM.

1974 New Facility



After outgrowing the Mechanic Street Shop, Ariel builds a 12,000 square foot manufacturing facility, which eventually grows into 30,000 square feet.

1978 35 Blackjack Rd.



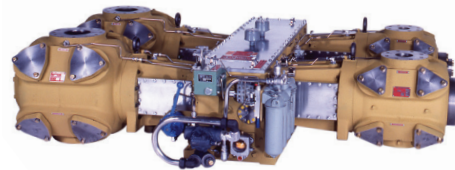
Due to Ariel's growth, a new headquarters is built. The facility includes 50,000 square feet of manufacturing space and 10,000 square feet of office space.

1978 Serial No. 1000



Ariel commemorates the 1,000th Ariel compressor manufactured, a four-throw JG.

1979 JGR



The JGR, named after Robert Ramsey, rated for 16,000-pound rod load enters the market with a new range of specifically designed cylinders.

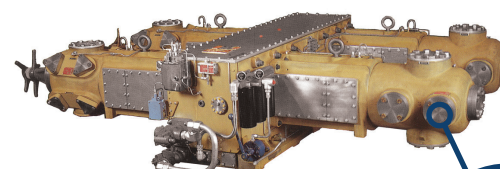
1980's

1983 JGI "The Thumper"



Ariel introduces a vertical, single-throw compressor without a balancing crosshead with a max RPM of 1,000.

1986 JGH

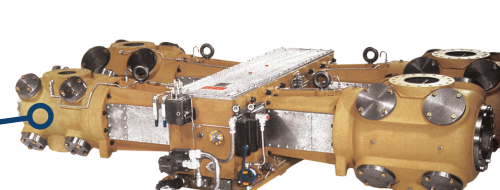


The JGH is built as a 4.5-inch stroke, 24,000 pound rod load version of the projected JGK.



Holt Atherton

1988 JGK



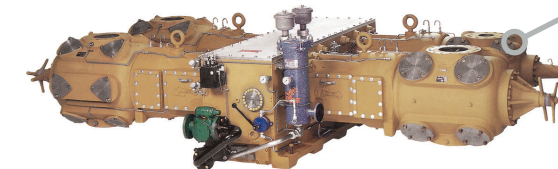
Completion of the new JGK line of cylinders allows the introduction of the fully rated JGK frame. This frame is named after Jim Buchwald's children.



Karen & Kurt Buchwald

1990's

1992 JGC



Ariel introduces the JGC, a 6.5-inch stroke, 1,000 RPM, 55,000 pound rod load machine to match-up with the new 300-mm stroke engines.



Bill Crooks

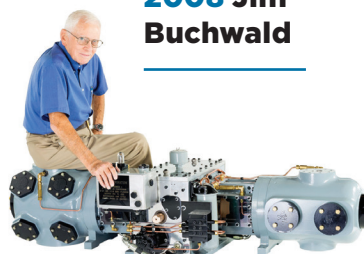
1998 Training Center



Ariel begins construction of the 40,000 square-foot Ariel Training Center. Designed to educate Ariel distributors and operators, this facility features two classrooms and a hands-on training lab.

2000's

2008 Jim Buchwald



Founder Jim Buchwald continues to mentor young engineers.

2012 Three Generations



Alex Wright, eldest son of Karen Buchwald Wright, is welcomed as the Director of Aftermarket Operations of Ariel Corporation.

2015 Unit #50,000 Ships

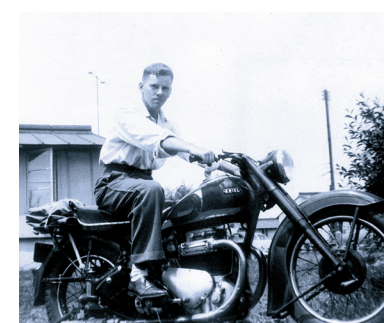


Serial #50,000 is one of 39 Ariel compressors procured for the 700-mile Rover Pipeline in Ohio.

2013 JGF

A 1,400 RPM version of the JGC with a 5" stroke and 57,000-pound rod load rating is introduced.

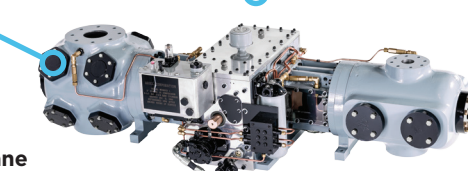
1966 The Birth of Ariel



7:30 p.m. on Wednesday, April 27, 1966 marks the legal birth of Ariel Corporation, named after Jim Buchwald's 1948 Ariel Square Four motorcycle.

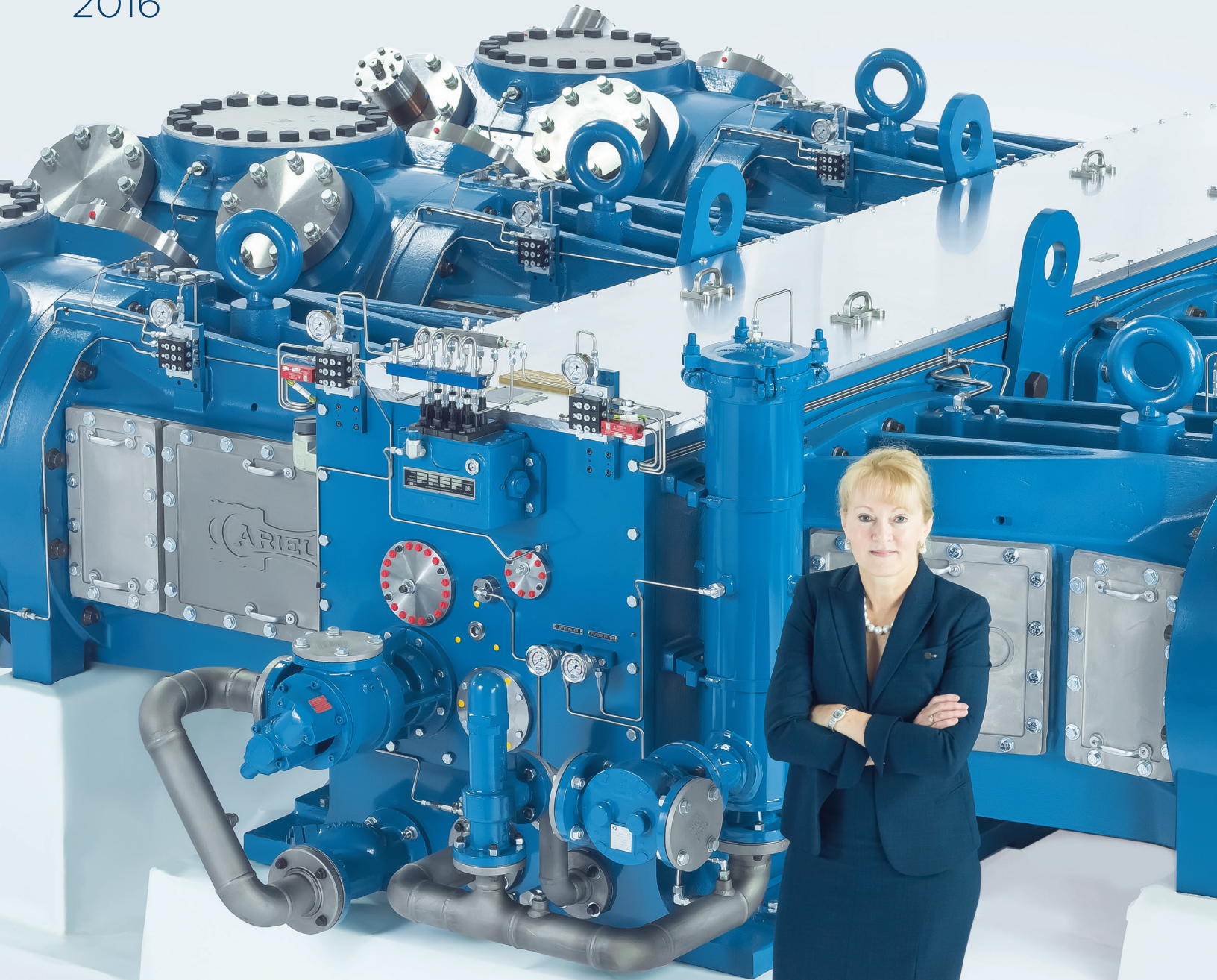


Ariel Founders George Woodman, Jim Buchwald & Jim Doane (Left to Right)



KAREN BUCHWALD-WRIGHT

2016



“ From our humble beginnings in 1966 to our more than one million-square feet of manufacturing and operations facilities in three cities, **Ariel has always been committed to the customer, and this won't change.** We are proud of our past, but we are looking to the future with great optimism. We believe in what we do. We believe in clean-burning natural gas. It will power the future. ”